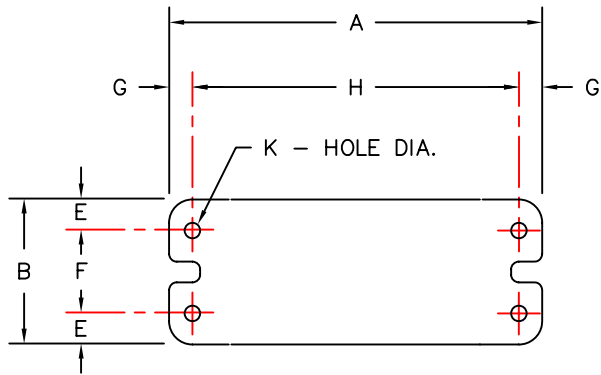


SPRING TYPE	SPRING COLOR	RATED LOAD	RATED DEFL.	A	B	C	D	E	F	G	H	K
SM-250C	BLUE	250/115	1.79/46	9.00 (229)	3.50 (89)	5.00 (127)	.62 (16)	.75 (19)	2.00 (50)	.75 (19)	7.50 (190)	.44 (12)
SM-450C	GREEN	450/205	1.54/39	9.00 (229)	3.50 (89)	5.00 (127)	.62 (16)	.75 (19)	2.00 (50)	.75 (19)	7.50 (190)	.44 (12)
SM-625C	BLACK	625/285	1.44/37	9.00 (229)	3.50 (89)	5.00 (127)	.62 (16)	.75 (19)	2.00 (50)	.75 (19)	7.50 (190)	.44 (12)
SM-800C	GRAY	800/365	1.31/33	9.00 (229)	3.50 (89)	5.00 (127)	.62 (16)	.75 (19)	2.00 (50)	.75 (19)	7.50 (190)	.44 (12)
SM-1000C	RED	1000/455	1.15/29	9.00 (229)	3.50 (89)	5.00 (127)	.62 (16)	.75 (19)	2.00 (50)	.75 (19)	7.50 (190)	.44 (12)
SM-1250C	BROWN	1250/565	1.09/28	9.00 (229)	3.50 (89)	5.00 (127)	.62 (16)	.75 (19)	2.00 (50)	.75 (19)	7.50 (190)	.44 (12)
SM-1700C	ORANGE	1700/770	1.00/25	9.00 (229)	3.50 (89)	5.00 (127)	.62 (16)	.75 (19)	2.00 (50)	.75 (19)	7.50 (190)	.44 (12)
SM-2200C	ORANGE/ GRAY	2200/998	1.00/25	9.00 (229)	3.50 (89)	5.00 (127)	.62 (16)	.75 (19)	2.00 (50)	.75 (19)	7.50 (190)	.44 (12)
SM-2465C	BLUE	2465/1118	1.00/25	9.00 (229)	3.50 (89)	5.00 (127)	.62 (16)	.75 (19)	2.00 (50)	.75 (19)	7.50 (190)	.44 (12)
* SM-2865C	BLUE/ GRAY	2865/1300	1.00/25	9.00 (229)	3.50 (89)	5.00 (127)	.62 (16)	.75 (19)	2.00 (50)	.75 (19)	7.50 (190)	.44 (12)
* SM-3500C	BLUE/ BROWN	3500/1588	1.00/25	9.00 (229)	3.50 (89)	5.00 (127)	.62 (16)	.75 (19)	2.00 (50)	.75 (19)	7.50 (190)	.44 (12)

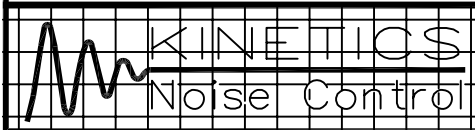
(LBS./Kg) (IN/mm)



BOLTING TEMPLATE

SM ISOLATORS HAVE A TYPICAL K_x/K_y OF 1.0
 SM ISOLATORS HAVE A TYPICAL OVERLOAD CAPACITY OF 50%
 ITEMS MARKED (*) HAVE A TYPICAL OVERLOAD CAPACITY OF 30%.
 SM SPRING ELEMENTS ARE PAINTED
 SM HOUSINGS ARE CAST IRON
 SM SPRING CAPS AND HARDWARE ARE BRIGHT ZINC PLATED
 SM ISOLATORS HAVE ADJUSTABLE SNUBBING

NOTE: ALL THREADED MEMBERS ARE AMERICAN STANDARD.



TITLE
SM-250C/3500C

LAST DATE
 REVISED
5/16/97

DRAWN BY
DW

DRAWING NO.
S-01.25-1C