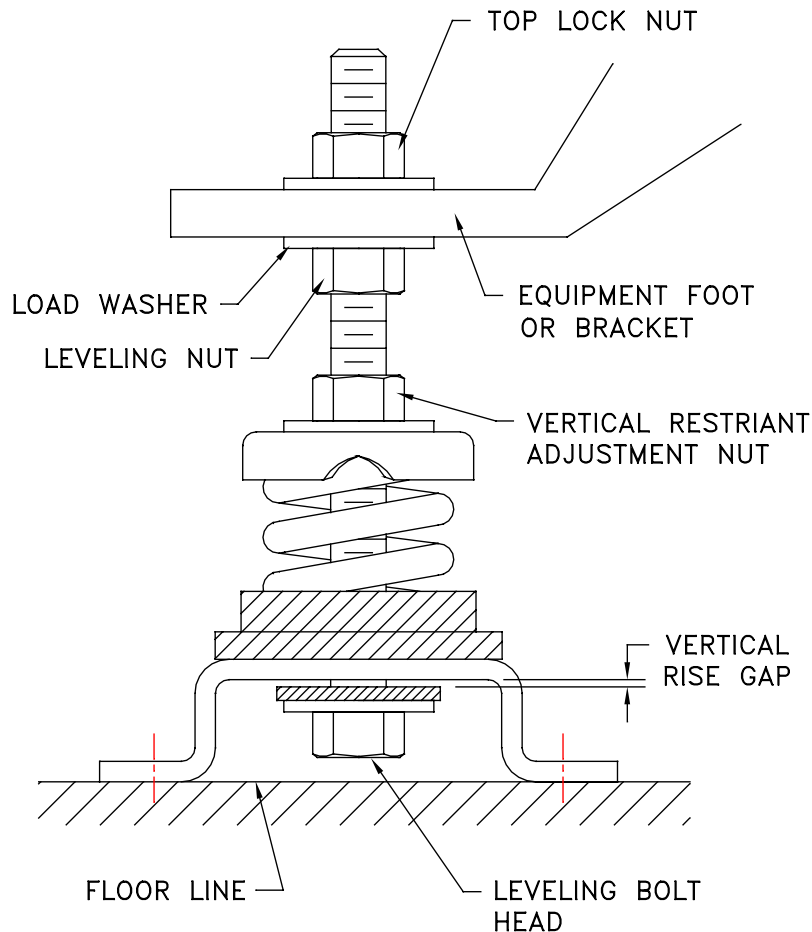


INSTALLATION INSTRUCTIONS FOR TYPE FRS KINETICS SPRING ISOLATION MOUNT



1. COORDINATE THE LOCATION OF EACH ISOLATOR WITH THE APPROPRIATE SUBMITTAL DRAWING AND WITH THE COLOR CODE CHART PROVIDED FOR EACH ISOLATOR.
2. REMOVE THE TOP LOCK NUT AND ONE WASHER.
3. RAISE THE EQUIPMENT AND SLIDE THE SPRING ISOLATOR UNDER THE EQUIPMENT OR UNDER THE MOUNTING BRACKET WITH THE EQUIPMENT FOOT OR BRACKET RESTING ON THE LOAD WASHER AS SHOWN.
4. LOOSELY THREAD THE TOP LOCK NUT ONTO THE ROD.
5. LOWER THE EQUIPMENT ONTO THE SPRING ISOLATORS TAKING CARE NOT TO PUSH THE EQUIPMENT SIDWAYS. THE SPRING WILL DEFLECT AND LEVELING BOLT HEAD WILL COME IN CONTACT WITH THE FLOOR LINE.
6. TURN THE LEVELING NUT COUNTER CLOCKWISE UNTIL THE EQUIPMENT IS LEVEL. THIS SHOULD BE THE MOUNT OPERATING HEIGHT $-1/4"$. REFER TO THE APPROPRIATE ISOLATOR SUBMITTAL DRAWING.
7. TURN THE VERTICAL RESTRAINT ADJUSTMENT NUT UNTIL THE VERTICAL GAP IS APPROXIMATELY $1/8"$ OR AS REQUIRED BY JOB SPECIFICATIONS. DO NOT ATTEMPT TO PLACE ALL THE WEIGHT ON ONE ISOLATOR BUT DISTRIBUTE THE LOAD PROPORTIONATELY. ALL ISOLATORS SHOULD NOW BE AT THE PROPER OPERATING HEIGHT.
8. TIGHTEN THE TOP LOCK NUT, THUS, BOLTING THE SPRING TO THE SUPPORTED EQUIPMENT AND LOCKING THE LEVELING BOLT AGAINST TURNING.
9. DO NOT ATTEMPT TO MOVE THE ISOLATORS LATERALLY WITH THE WEIGHT OF THE EQUIPMENT ON THEM. IF IT IS NECESSARY TO MOVE THE EQUIPMENT, REMOVE THE WEIGHT FROM THE ISOLATORS BY RAISING THE EQUIPMENT BEFORE MOVING. IF THIS PROCEDURE IS NOT FOLLOWED, DAMAGE COULD RESULT TO THE ISOLATORS OR EQUIPMENT.



TITLE
MODEL FRS
INSTALLATION INSTRUCTIONS

LAST DATE
REVISED
06/29/04

REVISED BY
DA

DRAWING NO.
SS-881005