

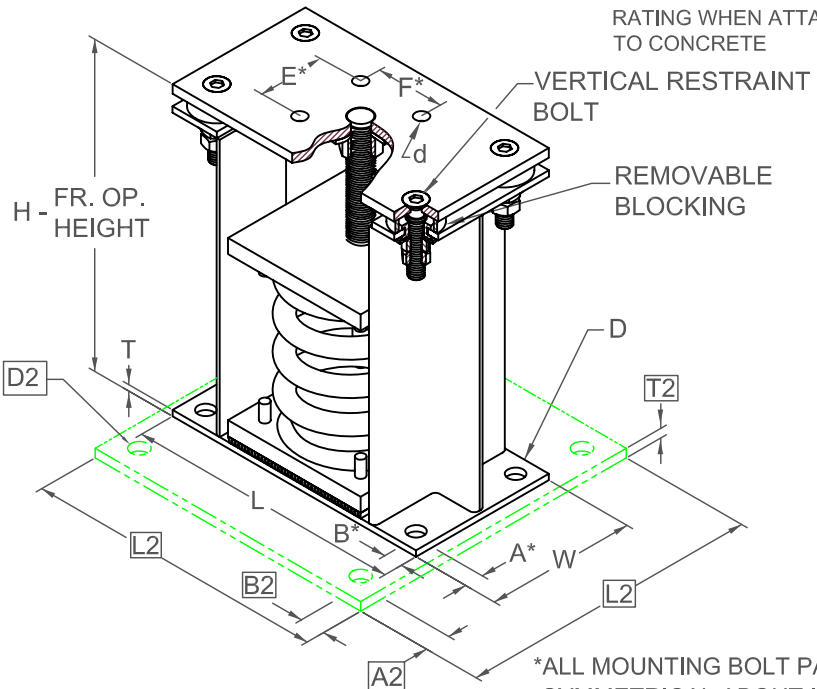
# FLSS 102 mm DEFLECTION SEISMIC ISOLATOR

S-I UNITS (mm AND kg)

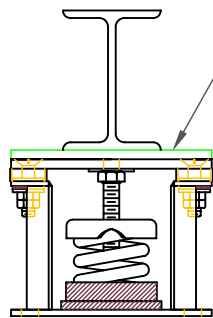
TYPE	L	W	T	A	B	D	E	F	d	H
4-100/1600	279	152	10	19	19	17	70	70	14	330

A2, B2, L2, T2, D2 DIMENSIONS REFER TO OPTIONAL BASE-PLATE USED TO INCREASE RATING WHEN ATTACHED TO CONCRETE

STANDARD RATINGS		SPRING COIL				
TYPE	SIZE	COLOR	FREE HT.	O.D.	RATED LOAD	DEFL.
FLSS	4-100	GRAY	254	143	45	102
FLSS	4-250	BLUE	254	143	113	102
FLSS	4-500	GREEN	254	143	227	102
FLSS	4-750	BLACK	254	143	340	102
FLSS	4-1000	RED	254	143	454	102
FLSS	4-1250	BROWN	254	143	567	102
FLSS	4-1600	ORANGE	254	143	726	102



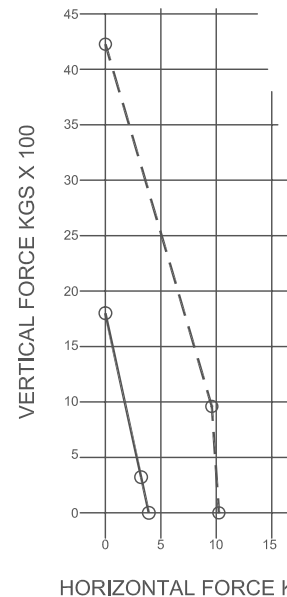
4-100/1600 REQUIRES 016 DIA. x 102 MIN. EMBED ANCHORS IN CONCRETE (ALLOWABLE LOADS BASED ON 21 MPa MIN CONCRETE)  
4-100/1600 ANCHOR BOLT TORQUE - 102 N-M, PULL TEST - 1211 kg



IF EQUIP SUPPORT STEEL IS 90° TO THE LONG ISOLATOR AXIS, AN ADD'L PLATE EQUAL IN THICKNESS TO THE TOP PLATE IS REQUIRED

## SPECIFICATIONS:

- VERTICALLY AND Laterally RESTRAINED SPRING ISOLATOR WITH CONSTANT FREE AND OPERATING HEIGHT AND REPLACEABLE NEOPRENE SNUBBING ELEMENTS.
- MINIMUM COIL OVERLOAD OF 50%.
- MINIMUM Kx/Ky RATIO OF 1.0.
- ALL ELEMENTS SAFE AT SOLID LOADING.
- POWDER COATED COILS AND HOT DIPPED GALVANIZED BRACKET.
- HOUSINGS MAY BE USED FOR BLOCKING DURING EQUIPMENT ERECTION.



\*ALL MOUNTING BOLT PATTERNS SYMMETRICAL ABOUT ISOLATOR CENTER-LINE

WELDED OR THROUGH BOLTED - - -  
ANCHORED TO CONCRETE ———

Computed horiz and vert seismic load combinations must fall within the restraint capacity envelope. Contact KNC for bolted to steel data.



KINETICS NOISE CONTROL, INC  
6300 IRELAN PL,  
DUBLIN, OH 43017 USA  
Ph: 614 889-0480, Fax: 614 889-0540  
www.kineticsnoise.com

Model:  
**FLSS-4-100 / 1600**

By: **JMJ**  
Date: **07/15/02**  
Revised: **05/04/06 / BB**

Drawing No:  
**S-01.22-41S METRIC**