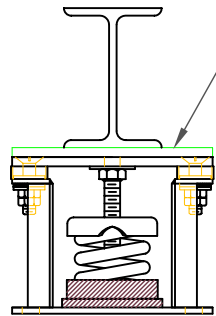


## FLS 4" DEFLECTION ISOLATOR IP UNITS (INCHES AND POUNDS)

TYPE	L	W	T	A	B	D	E	F	d	H
4-100/1600	10.75	6.00	0.25	0.75	0.75	0.69	2.75	2.75	0.56	13.00

STANDARD RATINGS		SPRING COIL				
		FREE		RATED		
TYPE	SIZE	COLOR	HT.	O.D.	LOAD	DEFL.
FLS	4-100	GRAY	10.00	5.63	100	4.00
FLS	4-250	BLUE	10.00	5.63	250	4.00
FLS	4-500	GREEN	10.00	5.63	500	4.00
FLS	4-750	BLACK	10.00	5.63	750	4.00
FLS	4-1000	RED	10.00	5.63	1000	4.00
FLS	4-1250	BROWN	10.00	5.63	1250	4.00
FLS	4-1600	ORANGE	10.00	5.63	1600	4.00

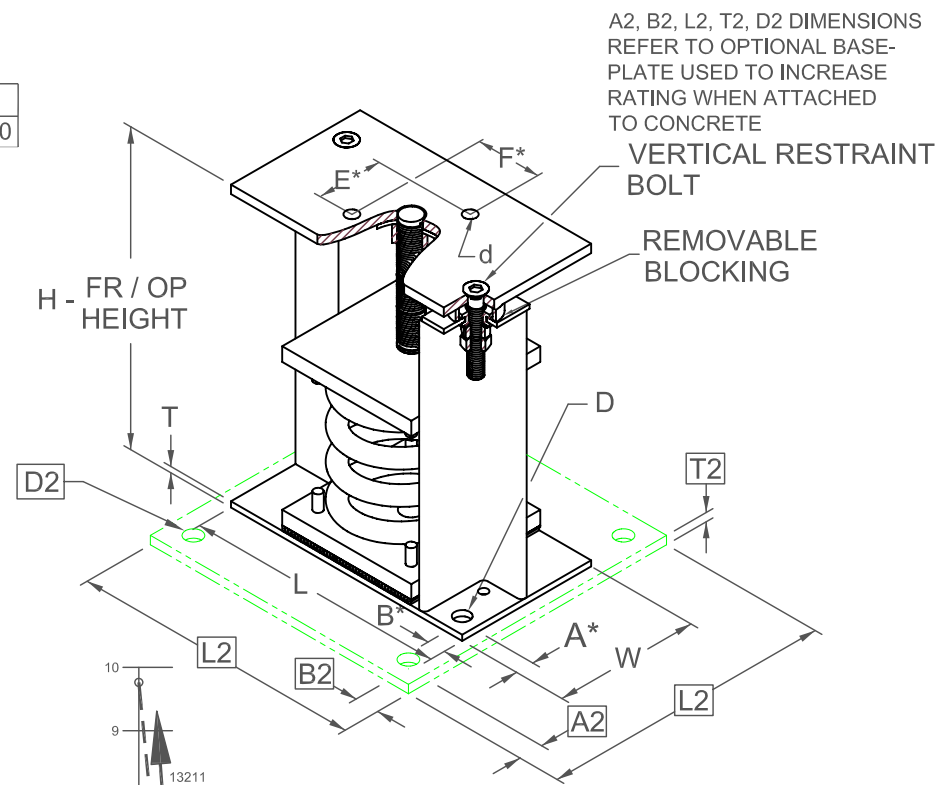
4-100/1600 REQUIRES 0.62 DIA. x 4.00 MIN. EMBED ANCHORS IN CONCRETE  
(ALLOWABLE LOADS BASED ON 3000 PSI MIN CONCRETE)  
4-100/1600 ANCHOR BOLT TORQUE - 75 FT-LB, PULL TEST - 2670 LB



IF EQUIP SUPPORT STEEL IS 90° TO THE LONG ISOLATOR AXIS, AN ADD'L PLATE EQUAL IN THICKNESS TO THE TOP PLATE IS REQUIRED

### SPECIFICATIONS:

- VERTICALLY AND Laterally RESTRAINED SPRING ISOLATOR WITH CONSTANT FREE AND OPERATING HEIGHT AND REPLACEABLE NEOPRENE SNUBBING ELEMENTS.
- MINIMUM COIL OVERLOAD OF 50%.
- MINIMUM K<sub>x</sub>/K<sub>y</sub> RATIO OF 1.0.
- ALL ELEMENTS SAFE AT SOLID LOADING.
- POWDER COATED COILS AND HOT DIPPED GALVANIZED BRACKET.
- HOUSINGS MAY BE USED FOR BLOCKING DURING EQUIPMENT ERECTION.



A2, B2, L2, T2, D2 DIMENSIONS REFER TO OPTIONAL BASE-PLATE USED TO INCREASE RATING WHEN ATTACHED TO CONCRETE

VERTICAL RESTRAINT BOLT

REMOVABLE BLOCKING

H - FR / OP HEIGHT

D2

T2

VERTICAL FORCE LBS X 1000

HORIZONTAL FORCE LBS X 1000

Computed horiz and vert seismic load combinations must fall within the restraint capacity envelope. Contact KNC for bolted to steel data.

\*ALL MOUNTING BOLT PATTERNS SYMMETRICAL ABOUT ISOLATOR CENTER-LINE

- WELDED TO STEEL — —
- THROUGH BOLTED - - -
- ANCHORED TO CONCRETE ———



KINETICS NOISE CONTROL, INC  
6300 IRELAN PL,  
DUBLIN, OH 43017 USA  
Ph: 614 889-0480, Fax: 614 889-0540  
www.kineticsnoise.com

Model:  
**FLS-4-100 / 1600**

By: **JMJ**  
Date: **07/09/02**  
Revised: **5/5/06 / PWM**

Drawing No:  
**S-01.22-41**