

FLS 51 mm DEFLECTION ISOLATOR

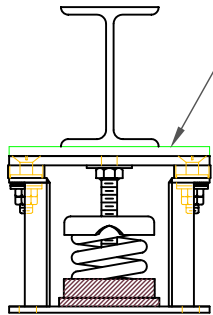
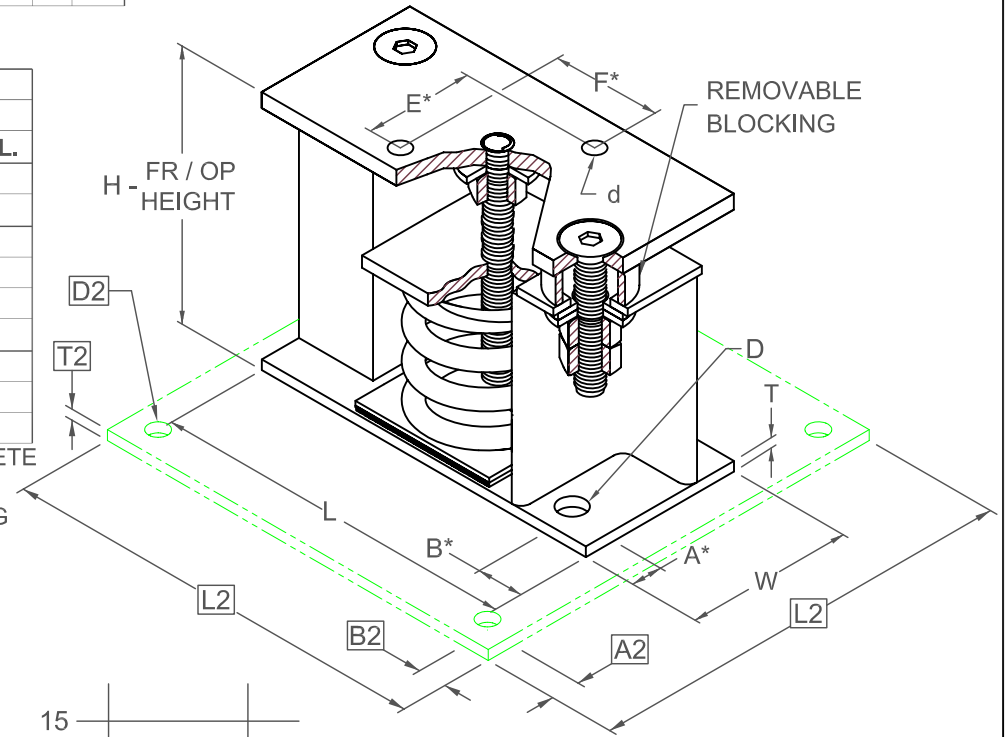
S-I UNITS (mm AND kg)

A2, B2, L2, T2, D2 DIMENSIONS REFER TO OPTIONAL BASE-PLATE USED TO INCREASE RATING WHEN ATTACHED TO CONCRETE

TYPE	L	W	T	A	B	D	E	F	d	H
2-2000/4500	273	127	6	19	35	17	70	70	14	254

STANDARD RATINGS		SPRING COIL						
TYPE	SIZE	COLOR		FREE HT.	O.D.	RATED		
		OUTER	INNER1	INNER2		LOAD	DEFL.	
FLS	2-2000	ORANGE			178	127	907	51
FLS	2-2500	BLUE			178	127	1134	51
FLS	2-2750	BLUE	BLUE		178	127	1247	51
FLS	2-3025	BLUE	GREEN		178	127	1372	51
FLS	2-3250	BLUE	BLACK		178	127	1474	51
FLS	2-3500	BLUE	ORANGE		178	127	1588	51
FLS	2-3900	BLUE	ORANGE	GREEN	178	127	1769	51
FLS	2-4100	BLUE	RED		178	127	1860	51
FLS	2-4500	BLUE	RED	GREEN	178	127	2041	51

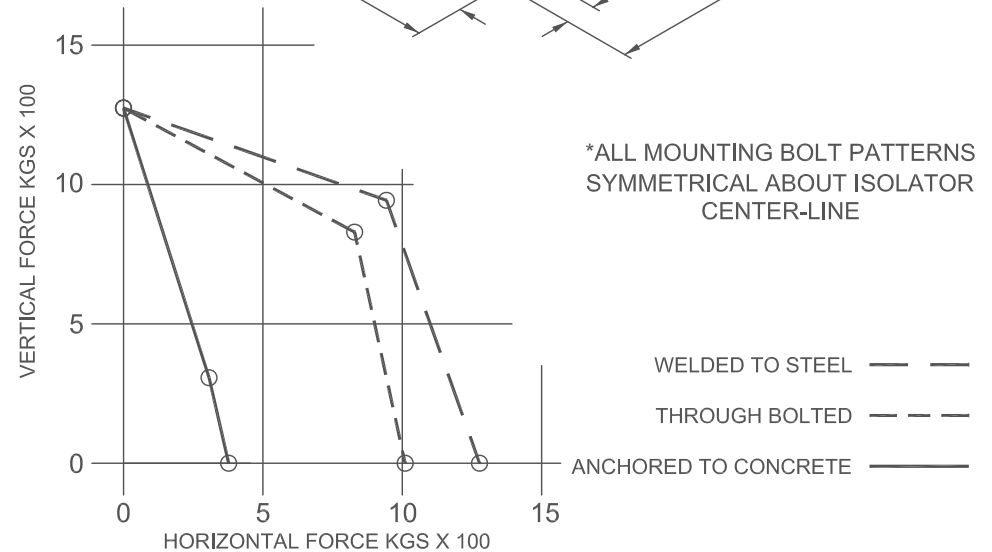
2-2000/4500 REQUIRES 16 DIA x 102 MIN EMBED ANCHORS IN CONCRETE (ALLOWABLE LOADS BASED ON 20700 KPA MIN CONCRETE)
 2-2000/4500 ANCHOR BOLT TORQUE - 102 N-M, PULL TEST - 1211 KG



IF EQUIP SUPPORT STEEL IS 90° TO THE LONG ISOLATOR AXIS, AN ADD'L PLATE EQUAL IN THICKNESS TO THE TOP PLATE IS REQUIRED

SPECIFICATIONS:

- VERTICALLY AND LATERALLY RESTRAINED SPRING ISOLATOR WITH CONSTANT FREE AND OPERATING HEIGHT AND REPLACEABLE NEOPRENE SNUBBING ELEMENTS.
- MINIMUM COIL OVERLOAD OF 50%.
- MINIMUM Kx/Ky RATIO OF 1.0.
- ALL ELEMENTS SAFE AT SOLID LOADING.
- POWDER COATED COILS AND HOT DIPPED GALVANIZED BRACKET.
- HOUSINGS MAY BE USED FOR BLOCKING DURING EQUIPMENT ERECTION.



*ALL MOUNTING BOLT PATTERNS SYMMETRICAL ABOUT ISOLATOR CENTER-LINE

Computed horiz and vert seismic load combinations must fall within the restraint capacity envelope. Contact KNC for bolted to steel data.



KINETICS NOISE CONTROL, INC
 6300 IRELAN PL,
 DUBLIN, OH 43017 USA
 Ph: 614 889-0480, Fax: 614 889-0540
 www.kineticsnoise.com

Model:
FLS-2-2000 / 4500

By: **JMJ**
 Date: **07/09/02**
 Revised: **5/5/06 / PWM**

Drawing No:
S-01.22-22
 METRIC